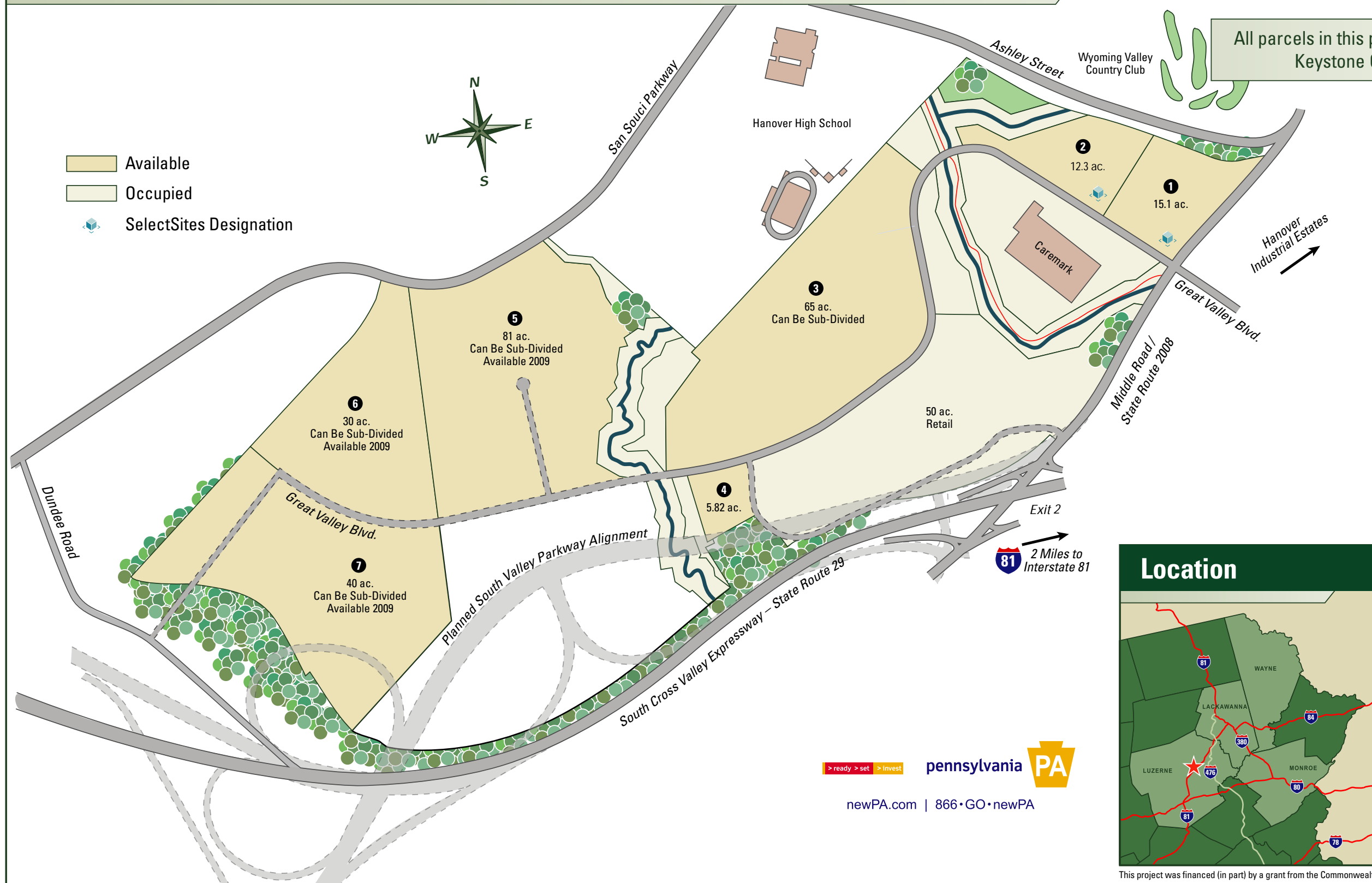


Hanover Crossings

Hanover Township • Luzerne County • Pennsylvania



All parcels in this park have been designated Keystone Opportunity Zones.

Contacts



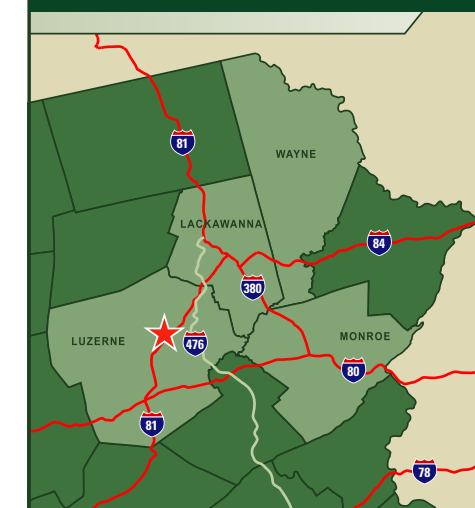
Greater Wilkes-Barre
CHAMBER
of Business and Industry

Greater Wilkes-Barre Chamber of Business and Industry

John L. Augustine, III
Senior Director of Economic and Entrepreneurial Development
570-823-2101
jaugustine@wilkes-barre.org

P.O. Box 5340
Wilkes-Barre, PA 18710
Phone: 570-823-2101
Fax: 570-822-5951
www.wilkes-barre.org/ed

Location



This project was financed (in part) by a grant from the Commonwealth of Pennsylvania, Department of Community and Economic Development.

ready > set > invest **pennsylvania PA**
newPA.com | 866-GO-newPA